



GOOD MORNING

Have Good Trading Day

THURSDAY



Price is what you pay.
Value is what you get.

- Warren Buffet



MARKET PULSE

INDIAN INDICES

NAME	CMP	NET CH.	%
SENSEX	27697	-284	-1.02
NIFTY	8544	-78	-0.91

INDIAN ADR'S

SYMBOL	CLOSE	GAIN/ LOSS %
DRREDDY	43.86	-0.54
HDFCBANK	69.08	-0.30
ICICIBK	7.30	+1.25
INFY	16.35	-0.24
TATAMOTOR	36.91	+0.41
WIPRO	11.36	-0.35

FII AND MF ACTIVITY

SYMBOL	In Crs.
FIIs Eq (Provisional)	578.17
FIIs Index Future	-32.71
FIIs Index Options	431.69
FIIs Stock Future	-1308.03
FIIs Stock Options	-67.64
DIIs Eq (Provisional)	-800.75

CURRENCY

RBI RATE	03-AUG-2016
RUPEE - \$	66.9368
EURO	74.9893
YEN 100	66.2600
GBP	89.0126

MARKET PULSE

GLOBAL INDICES

NAME	CMP	NET CH.	%
DOW	18355	+43	+0.23
NASDAQ	5159	+22	+0.43
NIKKEI	16020	-62	-0.39
HANG SENG	21807	+75	+0.35
SGX NIFTY	8621	+36	+0.42

WORLD COMMODITIES

FUTURE	US\$	CHANGES
CRUDE	41.12	+0.29
NATURAL GAS	2.837	-0.002
GOLD	1360.10	-4.6
SILVER	20.260	-0.211
COPPER	2.1895	-0.009

WORLD EVENTS

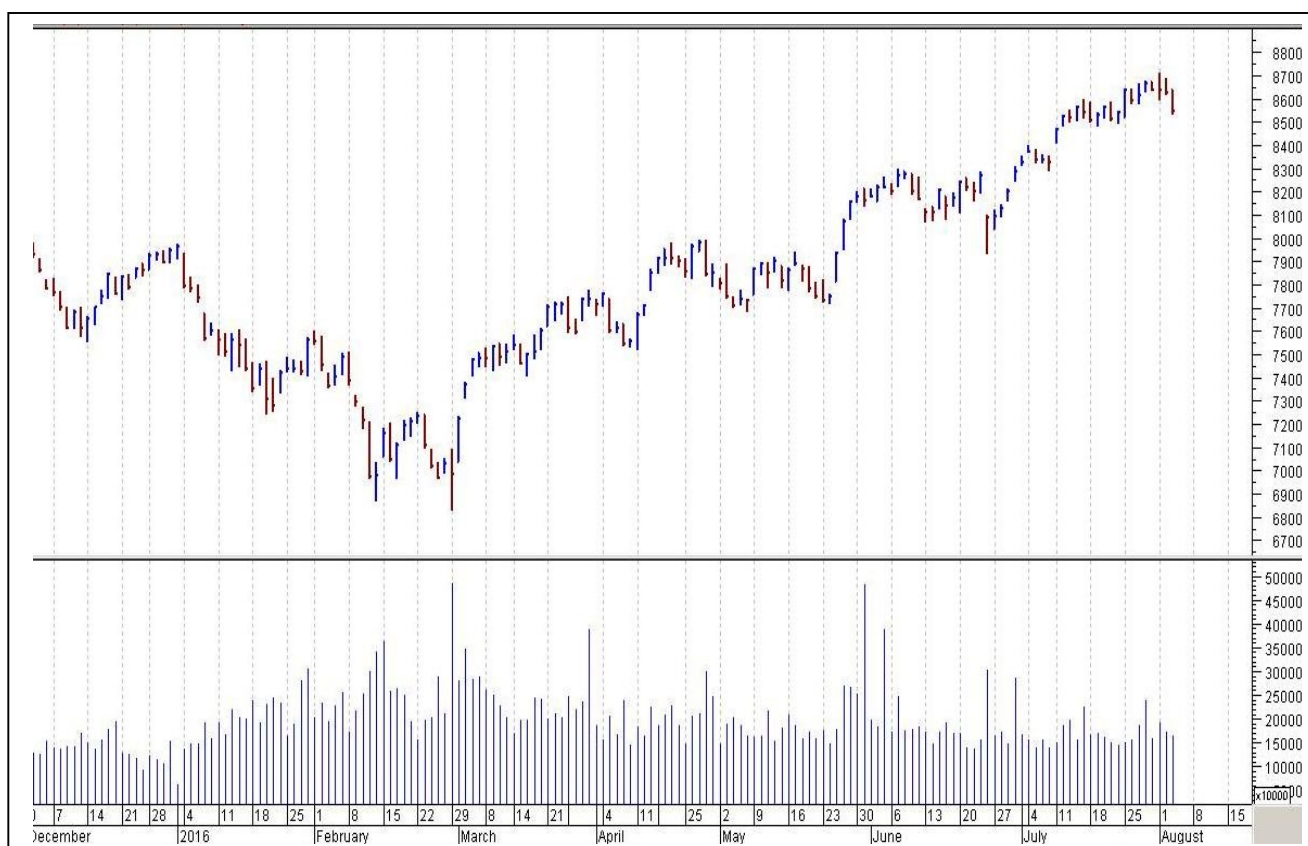
- US: Unemployment Claims
- UK:BOE Inflation Report
- MPC Official Bank Rate Votes
- Monetary Policy Summary
- Official Bank Rate

TOP STORY

- The GST Constitutional Amendment Bill passed in Rajya Sabha
- Oberoi's renovation to cost EIH 500 crore(BS)
- Baring Asia back in race for ICICI home finance: ET
- Telecom: Cabinet approves rates for Spectrum Usage Charge (SUC) for various bands of spectrum for which auction are going to be conducted shortly
- Berger paints charts out 400 cr expansion
- Fortis Healthcare subsidiary Fortis Cancer care (subsidiary) increases 12.2% stake in Lalitha Healthcare. Post acquisition stake would be 79.43%
- Siemens gets Rs217cr order for Power Grid Co of Bangladesh Ltd Punj Lloyd
- PL Engineering (subsidiary) sold entire stake in Simon Carves Engineering to Engineers & Constructors for \$2mn



NIFTY CHART



MARKET COMMENTARY

The Indian markets suffered sharp cuts in last session and the major averages lost over a percent on profit taking ahead of the crucial decision on long pending GST Bill. Today, the start is likely to be jubilant and markets will see good recovery with a gap-up start, as in the biggest tax reform since Independence, the national sales tax or GST Bill has been approved by the Rajya Sabha to replace a raft of different state and local taxes with a single unified value added tax system. For today's trade Nifty likely to trade in the range between 8565 – 8585 in the upper side and 8535 – 8515 in the lower side.

MARKET LEVELS

	CMP	SUPPORT LEVELS				RESISTANCE LEVELS			
NIFTY	8544	8535	8515	8475	8445	8565	8585	8625	8645
USDINR	67.26	67.2	67.1	67	66.9	67.35	67.45	67.55	67.65



BULK DEALS (BSE)

SCRIP	CLIENT NAME	BUY/SELL	QUANTITY	PRICE
DIAPOWER	ANTIQUE FINANCE PRIVATE LIMITED	S	700,000	39.4
DIAPOWER	TRISHAKTI POWER HOLDINGS PRIVATE LIMITED	B	467,000	39.4
EMAMIPAP	PLACID LIMITED	S	400,000	70.96
MODEX	RAPID CREDIT & HOLDINGS PRIVATE LIMITED	S	15,674	122.69

BULK DEALS (NSE)

SCRIP	CLIENT NAME	BUY/SELL	QUANTITY	PRICE
RPPINFRA	NOMURA SINGAPORE LIMITED	BUY	150000	176
SANCO	MINSHI CREATION PRIVATE LIMITED	BUY	48000	34.6
SATIN	MORGAN STANLEY MAURITIUS COMPANY LIMITED	BUY	1500000	571
SATIN	SHORECAP II LIMITED	SELL	2408188	572.65

SCRIP'S IN F&O BAN

(To resume for normal trading below 80% of market wide limit required)

JINDALSTEL

Initial Public Offering (IPO)

Company Name	Security type	Issue Start Date	Issue End Date	Status
DilipBuildcon Ltd	Equity	01-Aug-2016	03-Aug-2016	Closed
SP Apparels Ltd	Equity	04-Aug-2016	04-Aug-2016	Open



NIFTY 50 STOCKS: SUPPORT & RESISTANCE						
Symbol	Close	Support 1	Support 2	Pivot Point	Resistance1	Resistance2
ACC	1669	1658	1648	1672	1682	1695
ADANI PORTS	223	220	217	224	227	231
AMBUJACEM	263	259	256	263	266	270
ASIANPAINT	1143	1129	1115	1138	1152	1161
AXISBANK	549	542	536	548	555	560
BAJAJ-AUTO	2715	2694	2673	2726	2747	2780
BANKBARODA	149	146	144	151	153	157
BHARTIARTL	359	355	350	358	362	365
BHEL	133	131	129	135	137	141
BOSCHLTD	24754	24419	24084	24659	24994	25234
BPCL	573	566	559	575	581	590
CAIRN	183	181	178	183	186	188
CIPLA	529	518	507	527	538	546
COALINDIA	326	323	319	326	329	332
DRREDDY	2939	2920	2902	2949	2967	2996
GAIL	372	369	366	374	377	381
GRASIM	4968	4928	4887	4969	5009	5051
HCLTECH	826	809	792	834	851	876
HDFC	1325	1314	1302	1328	1340	1354
HDFCBANK	1240	1231	1222	1240	1250	1259
HEROMOTOCO	3231	3198	3165	3253	3287	3342
HINDALCO	136	134	132	136	137	139
HINDUNILVR	914	907	899	917	924	934
ICICIBANK	242	239	237	243	246	250
IDEA	105	103	102	105	106	107
INDUSINDBK	1178	1171	1163	1182	1190	1201
INFY	1085	1075	1064	1081	1091	1097
ITC	253	249	246	255	258	263
KOTAKBANK	756	753	749	758	762	768
LT	1479	1460	1442	1489	1507	1535
LUPIN	1680	1663	1646	1691	1708	1735
M&M	1447	1435	1423	1452	1464	1482
MARUTI	4874	4811	4749	4916	4978	5083
NTPC	158	156	155	158	159	161
ONGC	219	217	215	220	222	225
PNB	122	120	119	122	124	126
POWERGRID	176	173	171	176	179	182
RELIANCE	994	986	977	1000	1008	1023
SBIN	227	225	223	228	230	232
SUNPHARMA	840	825	810	836	851	862
TATAMOTORS	478	469	460	484	493	508
TATAPOWER	71	71	70	72	72	73
TATASTEEL	358	353	348	360	365	371
TCS	2656	2637	2618	2668	2687	2718
TECHM	497	492	487	498	503	509
ULTRACEMCO	3668	3645	3623	3673	3695	3722
VEDL	157	155	153	157	160	162
WIPRO	548	545	542	550	553	558
YESBANK	1236	1221	1205	1233	1248	1260
ZEEL	493	488	483	494	498	504



CORPORATE ACTION / BOARD MEETINGS

NSE Download Ref.No.: NSE/CML/32888:- Change in of the Company from Neyveli Lignite Corporation Limited (NEYVELILIG) to NLC India Limited (NLCINDIA) w.e.f August 04, 2016

NSE Download Ref No :NSE/FAOP/32916:- Adjustment of Futures and Options contracts in the security HINDPETRO. The adjusted strike price shall be arrived at by dividing the old strike price by the adjustment factor i.e.3. The revised market lot would be 2100

BOARD MEETINGS

COMPANY NAME	DATE	PURPOSE	RS. PER SH.
DBCORP	4-Aug-16	Dividend	4.25
ASAHIINDIA	4-Aug-16	Annual General Meeting/Dividend	0.6
FOSECOIND	4-Aug-16	Dividend	10
INDIANCARD	4-Aug-16	Annual General Meeting/Dividend	2.5
INEOSSTYRO	4-Aug-16	Annual General Meeting/Dividend	4
HERCULES	4-Aug-16	Annual General Meeting/Dividend	1.5
MADHAV	4-Aug-16	Annual General Meeting/Dividend	1
JMCPROJECT	4-Aug-16	Annual General Meeting/Dividend	1
MBLINFRA	4-Aug-16	Annual General Meeting/Dividend	1.5
NEULANLAB	4-Aug-16	Annual General Meeting/Dividend	2
IVP	4-Aug-16	Annual General Meeting/Dividend	2
JAMNAAUTO	4-Aug-16	Annual General Meeting/Dividend	2.75
JAYAGROGN	4-Aug-16	Dividend	1.25
PKTEA	4-Aug-16	Dividend	0.75
SANOFI	4-Aug-16	Dividend	18
AVANTIFEED	4-Aug-16	Dividend	7
BHAGERIA	5-Aug-16	Annual General Meeting/Dividend	5
CASTROLIND	5-Aug-16	Dividend	4.5
GODREJCP	5-Aug-16	Dividend	1
VOLTAS	5-Aug-16	Annual General Meeting/Dividend	2.6
ICRA	5-Aug-16	Dividend	25
NESTLEIND	5-Aug-16	Dividend	12

NEWS & RUMOURS:

- Gold (Spot Dollar) major support = \$1330/\$1299 & Resistance = \$1393/\$1422.
- Crude oil range->\$34 to \$44.
- Stocks Fluctuate as Bond Rally Unravels, Crude Rebounds Over \$40: - Signs of weakness in the American consumer kept U.S. equities near a three-week low, while a rebound in European lenders limited losses in the region's benchmark index. The rally in global bonds ended, while crude pushed higher for the second time in 10 days.
- Dollar holds onto gains, ADP data supports: - The dollar held onto gains against the other major currencies on Wednesday, despite weak U.S. service sector data as an upbeat U.S. jobs report continued to support demand for the greenback.
- WTI oil rallies back above \$40 after huge gasoline withdrawal: - West Texas Intermediate oil futures climbed back above the \$40-level in North America trade on Wednesday, after data showed that gasoline supplies in the U.S. fell sharply last week, offsetting a surprise build in crude stockpiles. The U.S. Energy Information Administration said in its weekly report that [gasoline inventories](#) decreased by 3.3 million barrels in the week ended July 29, much more than the expected 0.2-million-barrel decline.
- U.S. gas futures rally 3% on hopes for bullish storage data: - U.S. natural gas futures rallied in early trade on Wednesday, as market players looked ahead to fresh weekly information on U.S. gas inventories to gauge the strength of demand for the fuel.
- Gold little changed near 28-month high after U.S. ADP jobs report: - Gold prices were little changed in North American trade on Wednesday, holding near a 28-month high despite data showing the U.S. economy added [more private payrolls that expected last month](#).

TRENDS & OUTLOOK – DATE: 04- Aug- 2016

PRECIOUS METALS:

COMMDITY (MCX)	S2	S1	PIVOT POINT	R1	R2
GOLD (Oct)	31201	31465	31770	32090	32333
SILVER (Sep)	45500	46600	47900	49110	50454

BASE METALS

COMMDITY (MCX)	S2	S1	PIVOT POINT	R1	R2
COPPER (Aug)	316	320	325	331	336
ZINC (Aug)	146.10	148.50	151.30	154.60	156.40
LEAD (Aug)	116.10	118.60	121.30	123.45	126.25
NICKEL (Aug)	691	705	716	736	752

ENERGY

COMMDITY (MCX)	S2	S1	PIVOT POINT	R1	R2
CRUDE OIL (Aug)	2520	2600	2700	2820	2930
NATURAL GAS (Aug)	178	183	189	196	203

DATE TALKS : TODAY'S ECONOMIC DATA :

BOE Inflation Report, Monetary Policy Summary of GBP, BOE Gov Carney Speaks, Challenger Job Cuts, Unemployment Claims, Factory Orders, Natural Gas Storage.



LET THE
WOMAN
POWER RISE

**WOMEN
DESK**

All the Ladies in the house are
cordially invited to come
& explore their trading talents.

TOLL FREE: 18001030059



Registered Office

Indira House, 3rd Floor, 5 Topiwala Lane,
Opp. Lemington Road Police Station, Grant Road (East), Mumbai - 400007.

Corporate Office

'Ramavat House' E-15, Saket Nagar, Indore - 452018 (M.P.)

Customer Care

Tel: +91-731-4097170/ 71/ 72/ 73/ 74 M. +91 93031 72345

Email: customercare@indiratrade.com www.indiratrade.com



INSTITUTIONAL DEALING UNIT

Africa House, 5, Topiwalla Lane, Lamington Road, Mumbai, 400007

Tel: +91 22 30080678 Fax : +91 22 23870767 Email : ie@indiratrade.com

Disclaimer

This report is for private circulation within the Indira Group. This report is strictly confidential and for information of the selected recipient only and may not be altered in any way, transmitted to, copied or distributed, in part or in whole, to any other person or to the media or reproduced in any form. This report should not be construed as an offer or solicitation to buy or sell any securities or any interest in securities. It does not constitute a personal recommendation or take into account the particular investment objectives, financial situations, or any such factor. The information, opinions estimates and forecasts contained here have been obtained from, or are based upon, sources we believe to be reliable, but no representation of warranty, express or implied, is made by us to their accuracy or completeness. Opinions expressed are our current opinions as of the date appearing on this material only and are subject to change without notice.